

Field Trip Preparation – people who need rides

When: Saturday, April 14th

Wave 1

- Depart at 10 AM (be there by 9:55 AM)
- Return to URI by 12 Noon

Wave 2

- Depart at 1 PM (be there by 12:55 PM)
- Return to URI by 3 PM

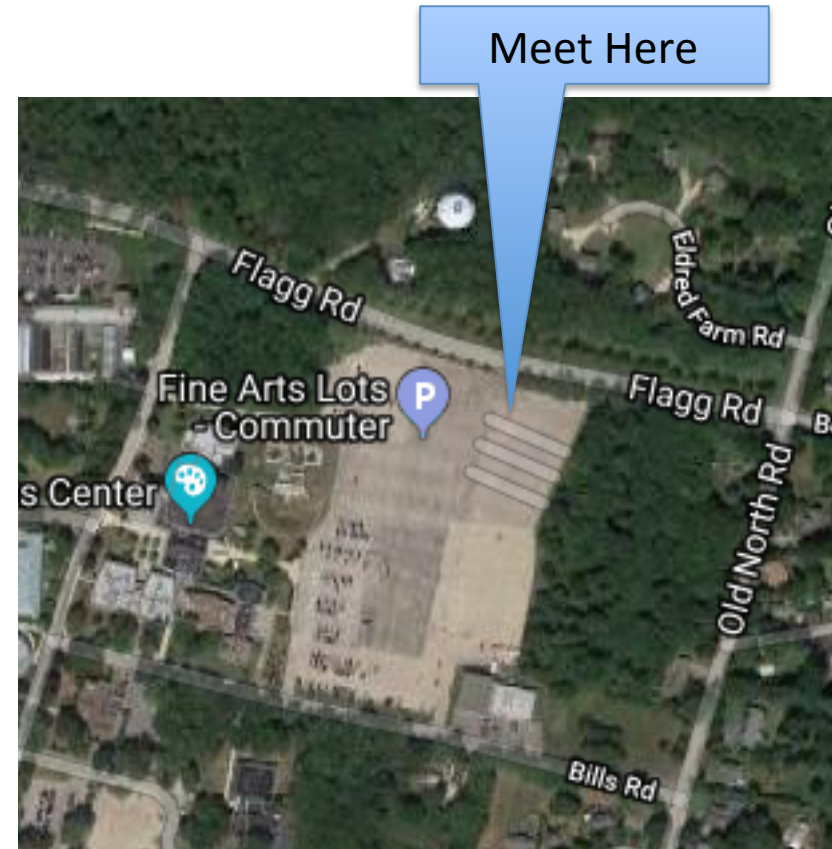
Where: URI Flagg Commuters Lot (NE corner)
Car Pool to Carpenter's Beach (SK)

Weather Forecast:

Partly Cloudy. High 56F.

Winds ESE at 10 to 20 mph.

Dress appropriately, it will feel cooler on the beach than you think.



Field Trip Preparation – people driving themselves

When: Saturday, April 14th

Wave 1

- Arrive by 10:20-10:30 AM

Wave 2

- Arrive by 1:20-1:30 PM

Where: Carpenter's Beach Pavilion (see maps on next page)

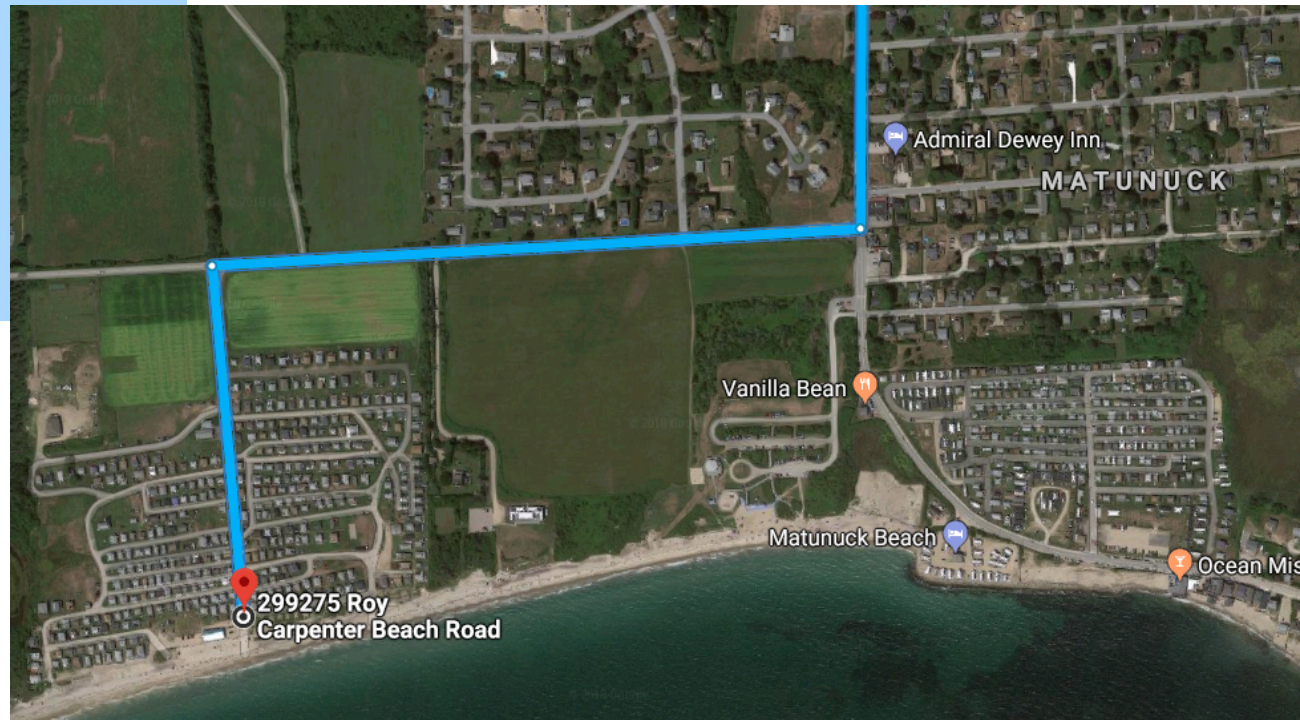
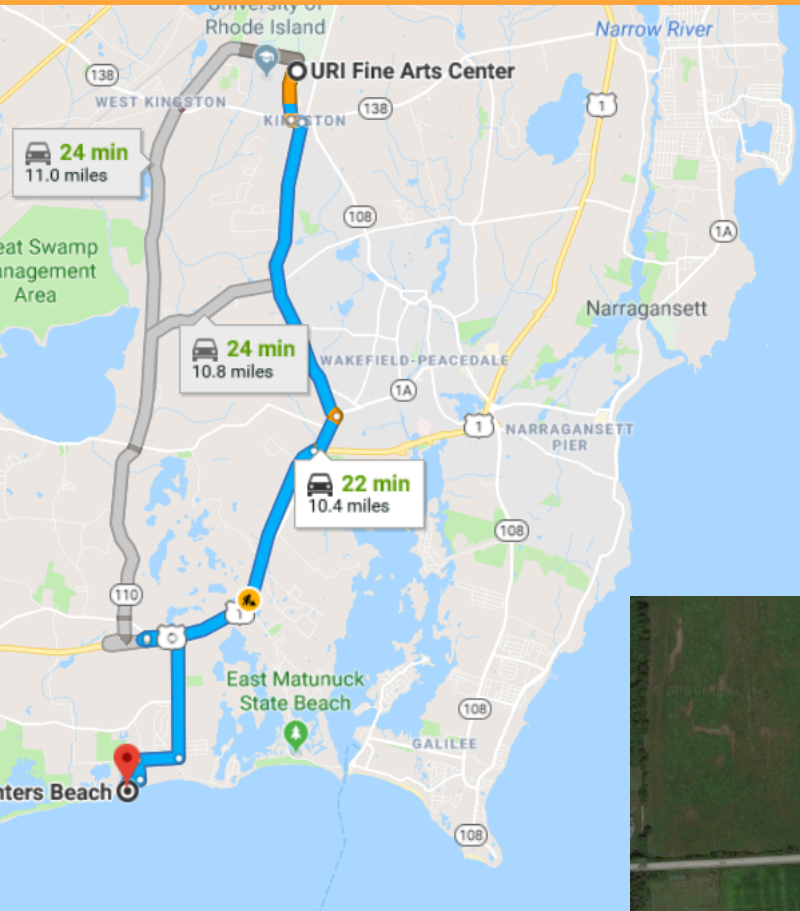
Weather Forecast:

Partly Cloudy. High 56F.

Winds ESE at 10 to 20 mph.

Dress appropriately, it will feel cooler on the beach than you think.

Field Trip Preparation – people driving themselves

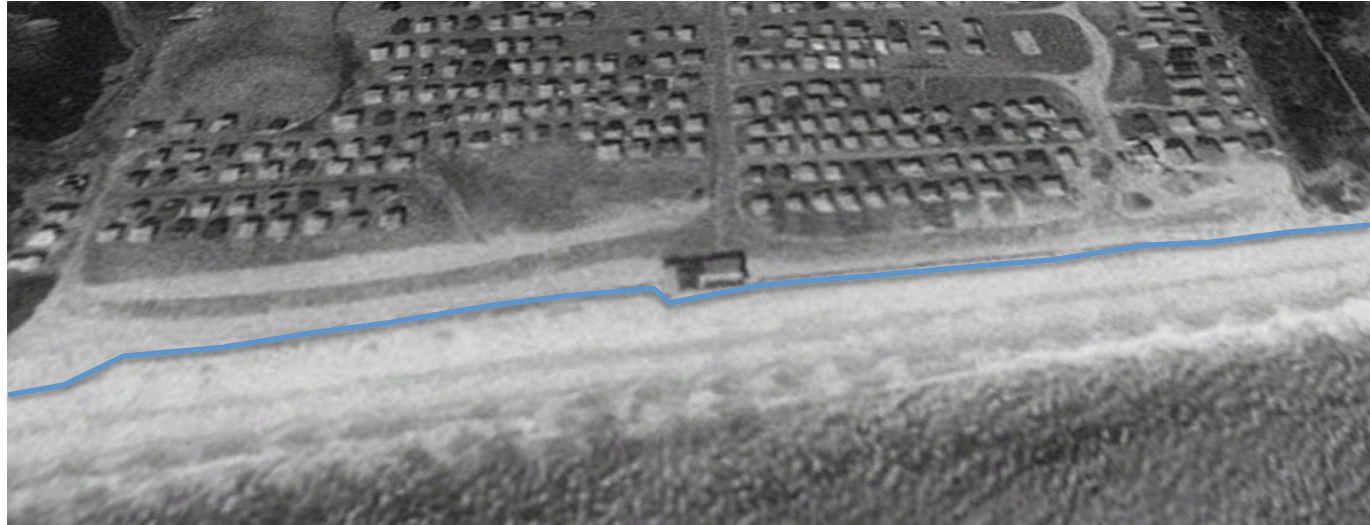


Field Trip Review

Time Scales of Change

- annual patterns
- coastal changes in your lifetime

3/28/1995



4/2/2012



Field Trip Review

